



Gyu AT HOME!

TAKEOUT AND DELIVERY MENU

★ = Best Seller
GF = Gluten-Free
V = Vegetarian Friendly

\$19.45
PER PERSON

CREATE YOUR OWN GYU-BENTO COMBO

Comes with **Half Gyu-Kaku Salad 160 Cal**, **Miso Soup 35 Cal**, **Hot & Spicy Sauce 40 Cal**, and **Sweet Soy Sauce 35 Cal**. Chosen BBQ items will be cooked upon your order and served on **White Rice**.

1 Choose 2 BBQ Items Please select portion size and marinade with your BBQ selection



Toro Beef 250–520 Cal

3.5 oz **+\$0** 7 oz **+\$2**

Marinade Choices: Sweet Soy Tare or Shio



Yaki-Shabu Beef 205–460 Cal

3.5 oz **+\$0** 7 oz **+\$2**

Marinade Choices: Miso or Umakara



Bistro Hanger Steak 205–560 Cal

3.5 oz **+\$2** 7 oz **+\$4**

Marinade Choices: Miso or Garlic



Chicken Breast 145–540 Cal

3.5 oz **+\$0** 7 oz **+\$2**

Marinade Choices: Basil or Teriyaki GF



Shrimp 200–440 Cal

4 pcs **+\$0** 8 pcs **+\$3**

Marinade Choices:
Garlic GF or Spicy Jalapeño Miso



Pork Belly 510–1040 Cal

3.5 oz **+\$0** 7 oz **+\$2**

Marinade Choices: Shio or Sweet Soy Tare



Harami Skirt Steak 275–560 Cal

3.5 oz **+\$4** 7 oz **+\$8**

Marinade Choices: Miso or Shio



Prime Kalbi Short Rib 390–840 Cal

3.5 oz **+\$6** 7 oz **+\$12**

Marinade Choices: Sweet Soy Tare or Salt & Pepper

2 Select Amount of Rice

Small 8 oz
340 Cal

Regular 12 oz
510 Cal

Large 16 oz
680 Cal

3 Choose 2 Side Dishes



Japanese Chicken Karaage 3 oz
230 Cal



Fried Pork Gyoza Dumplings 3 pcs
280 Cal



Takoyaki
3 pcs 265 Cal



Edamame 3 oz 100 Cal



Napa Kimchi
3 oz 27 Cal



Broccoli 3 oz 80 Cal

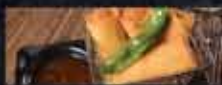
SIDE ORDER



Edamame 200 Cal
\$5.00



Fried Pork Gyoza Dumplings 480 Cal
\$7.45



Vegetable Spring Rolls 450 Cal
\$8.95



Japanese Chicken Karaage 390 Cal
\$7.45



Spicy Addicting Cucumber 250 Cal
\$6.95



Napa Kimchi 40 Cal
\$6.00



Takoyaki 530 Cal
\$7.95



Black Pepper Wings 330 Cal
\$10.45



Miso Chili Wings 580 Cal
\$11.00



Fried Cheese Wontons 330 Cal
\$7.45



Yuzu Shishito Peppers 270 Cal
\$7.95



Gyu-Kaku Salad Full 310 Cal **\$9.45**
Half Size 160 Cal **\$5.95**



Miso Soup GF
35 Cal
\$3.95



White Rice V GF
340 Cal
\$3.50



S'more V
1 pc 110 Cal
\$1.95

Select canned beverages available for takeout and delivery

Before placing your order, please inform your server if a person in your party has a food allergy • Our food may contain MSG, eggs, soy, milk, wheat, sesame seeds, and/or nuts • 2000 calories a day is used for general nutrition advice, but calorie needs vary. Additional nutritional information available upon request • No item substitutions allowed • Actual presentation may differ from images on the menu • Other restrictions may apply.



Gyu-Kaku
Japanese BBQ



Gyu AT HOME!

TAKEOUT AND DELIVERY MENU



GYU-BOWLS

1 Choose your Gyu-Bowl Set

- Miso Soup Set 35 Cal
- Half Gyu-Kaku Salad Set 160 Cal
- Combo Set w/ Miso Soup, Salad, and Single S'more 305 Cal **(+\$2)**



2 Choose one of your favorite Gyu-Bowls



Sukiyaki Fried Rice with Beef Bowl
\$12.95 710 Cal



Beyond Bibimbap Bowl
\$12.95 630 Cal



Umakara Beef Bowl
\$12.95 790 Cal



Chicken Katsu Bowl
\$12.95 1010 Cal



Chicken Karaage Bowl
\$12.95 830 Cal



Garlic Fried Rice Bowl
\$10.45 630 Cal

GYU-NOODLES Combo Set Not Available, À La Carte Only.



Garlic Noodles w/ Shoyu Chicken
\$12.50 930 Cal



Garlic Noodles w/ Crunchy Garlic Shrimp
\$13.50 950 Cal



Spicy Beef Ramen
\$11.50 960 Cal



Goma Negi Shio Ramen
\$11.50 930 Cal



Tonkotsu Kakuni Ramen
\$11.50 810 Cal



Miso Yaki Udon
\$11.50 830 Cal

OTHER BOWLS

- Mega Sukiyaki Fried Rice with Beef Bowl**.....\$29.95 2220 Cal
- Mega Garlic Noodles with Shoyu Chicken Bowl**\$29.95 2790 Cal



FAMILY MEAL FOR ALL

5154 Cal

\$69.00

Gyu-Bento 1

Yaki-Shabu Beef Miso
Napa Kimchi
Broccoli
White Rice

Gyu-Bento 2

Toro Beef Sweet Soy Tare
Napa Kimchi
Broccoli
White Rice

Sukiyaki Fried Rice with Beef Bowl
Garlic Noodles with Shoyu Chicken Bowl
Gyu-Kaku Salad
Black Pepper Wings
Fried Pork Gyoza Dumplings
Edamame

★ = Best Seller GF = Gluten-Free V = Vegetarian Friendly

Before placing your order, please inform your server if a person in your party has a food allergy • Our food may contain MSG, eggs, soy, milk, wheat, sesame seeds, and/or nuts • 2000 calories a day is used for general nutrition advice, but calorie needs vary. Additional nutritional information available upon request • No item substitutions allowed • Actual presentation may differ from images on the menu • Other restrictions may apply.