



For Groups of 2 People

BBQ COURSES

MEAT LOVERS

3150 Cal

\$85 SERVES 2 PEOPLE

\$97 VALUE



STARTERS

- Miso Soup x2
- White Rice x2
- Edamame
- Half Gyu-Kaku Salad x2
- Japanese Chicken Karaage

BBQ ITEMS

- Premium Sirloin* *Sweet Soy Tare*
- Yaki-Shabu Beef* *Miso*
- Bistro Hanger Steak* *Miso*
- Umakara Ribeye*
- New York Steak* *Garlic*
- Toro Beef* *Sweet Soy Tare*

DESSERT

- S'mores 2 pcs

CHEF'S FAVORITE

3590 Cal

\$95 SERVES 2 PEOPLE

\$118 VALUE



STARTERS

- Miso Soup x2
- Beef Sukiyaki Bibimbap
- Gyu-Sushi 4 pcs
- Napa Kimchi
- Gyu-Kaku Salad

BBQ ITEMS

- Prime Kalbi Short Rib* *Sweet Soy Tare*
- Harami Skirt Steak* *Miso*
- Filet Mignon* *Salt & Pepper*
- Umakara Ribeye*
- Pork Belly* *Shio*
- Shrimp Garlic*
- Broccoli w/ Cheese

AVAILABLE ONLY DURING HAPPY HOUR!

HAPPY HOUR

2780 Cal

\$75 SERVES 2 PEOPLE

\$87 VALUE



STARTERS

- Miso Soup x2
- White Rice x2
- Edamame
- Half Gyu-Kaku Salad x2

BBQ ITEMS

- Bistro Hanger Steak* *Miso*
- Yaki-Shabu Beef* *Miso*
- Toro Beef* *Sweet Soy Tare*
- Angus Beef Rib* *Sweet Soy Tare*
- Umakara Pork*
- Chicken Breast* *Basil*
- Assorted Vegetables

Before placing your order, please inform your server if a person in your party has a food allergy.
 *These items are cooked to order and may be served raw or undercooked. Consuming raw or undercooked meats, poultry, seafood, shellfish, or eggs may increase your risk of foodborne illness. No item substitutions allowed for courses • 2000 calories a day is used for general nutrition advice, but calorie needs vary. Additional nutritional information available upon request • Actual presentation may differ from images on the menu.



For Larger Groups

BBQ COURSES

BBQ COURSES

NINJA

5190 Cal

\$115 SERVES 3 PEOPLE

\$137 VALUE



STARTERS

Gyu-Kaku Salad
Miso Soup x3
White Rice x3
Cheese Corn Butter
Fried Calamari

DESSERT

S'mores 3 pcs

BBQ ITEMS

Yaki-Shabu Beef* *Miso*
Harami in Secret Pot*
Kalbi Chuck Rib* *Sweet Soy Tare*
Umakara Ribeye*
Toro Beef* *Sweet Soy Tare*
Pork Belly* *Shio*
Chicken Breast* *Basil w/ Cheese Fondue*
Garlic Mushroom

YAKINIKU

5280 Cal

\$160 SERVES 4 PEOPLE

\$177 VALUE



STARTERS

Miso Soup x4
Spicy Tuna Volcano*
Gyu-Sushi 4 pcs
Gyu-Kaku Salad
Napa Kimchi
Edamame

DESSERT

S'mores 4 pcs

Japanese Chicken Karaage
Chicken Garlic Noodles

BBQ ITEMS

Bistro Hanger Steak* *Miso*
Yaki-Shabu Beef* *Miso*
Filet Mignon* *Salt & Pepper*
Kalbi Chuck Rib* *Sweet Soy Tare*
New York Steak* *Garlic*
Premium Sirloin* *Sweet Soy Tare*
Umakara Ribeye*
Umakara Pork*
Chicken Breast* *Basil*
Shrimp Garlic*

SHOGUN

8920 Cal

\$220 SERVES 6 PEOPLE

\$273 VALUE



STARTERS

Miso Soup x6
Gyu-Kaku Salad x2
Edamame x3
Beef Sukiyaki Bibimbap x2
Fried Pork Gyoza Dumplings x2

DESSERT

S'mores 6 pcs

BBQ ITEMS

Prime Kalbi Short Rib* *Sweet Soy Tare* x2
Harami Skirt Steak* *Miso* x2
Filet Mignon* *Salt & Pepper* x2
Premium Sirloin* *Sweet Soy Tare* x2
Yaki-Shabu Beef* *Miso* x2
Pork Belly* *Shio* x2
Shrimp Garlic* x2
Assorted Vegetables x2

Before placing your order, please inform your server if a person in your party has a food allergy. *These items are cooked to order and may be served raw or undercooked. Consuming raw or undercooked meats, poultry, seafood, shellfish, or eggs may increase your risk of foodborne illness. No item substitutions allowed for courses • 2000 calories a day is used for general nutrition advice, but calorie needs vary. Additional nutritional information available upon request • Actual presentation may differ from images on the menu.

Gyu-Kaku's **MUST-TRY**

PRIME KALBI SHORT RIB*

*Juicy, marbled USDA
prime beef that melts
in your mouth.
Served with premium
dipping sauce*



HARAMI SKIRT STEAK*

*Our best-selling
21-day aged skirt steak*



BEEF SUKIYAKI BIBIMBAP

*Our signature thin-sliced
Sukiyaki marinated beef,
rice topped with sliced onions,
green onions, and sesame seeds.
Served in a sizzling hot stone bowl*



GYU-SUSHI

*Uniquely crafted premium
roast beef sushi with a
splash of our Japanese
shoyu barbecue sauce
and served with
kuki-wasabi*



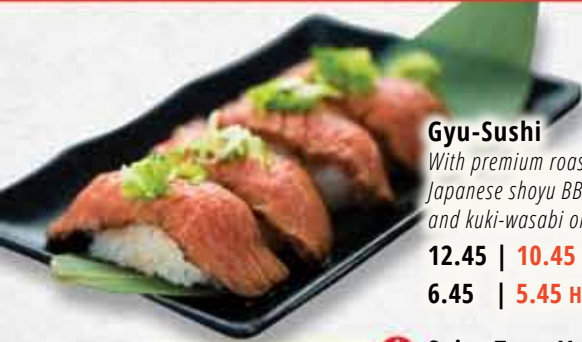
S'MORES

*Roast marshmallows right
at your table to enjoy
this campfire classic!*



SMALL PLATES

HH = HAPPY HOUR
HAPPY HOUR PRICES ARE APPLIED
ONLY DURING HAPPY HOUR



Gyu-Sushi
 With premium roast beef,
 Japanese shoyu BBQ sauce,
 and kuki-wasabi on the side
12.45 | 10.45 HH 4 pcs 330 Cal
6.45 | 5.45 HH 2 pcs 165 Cal



★ Spicy Tuna Volcano*
 Spicy tuna on crispy fried rice,
 drizzled with Japanese shoyu
 BBQ sauce
8.95 | 7.95 HH 430 Cal



Spicy Addicting Cucumber **V**
 Crunchy cucumbers in a slightly
 spicy crunchy chili garlic dressing
5.95 | 4.95 HH 250 Cal



Miso Chili Wings
 Chicken wings coated in our
 sweet and spicy miso chili sauce
10.00 580 Cal



Black Pepper Wings
 Dangerously addicting! Fresh-fried
 wings tossed in a sweet soy
 and black pepper sauce
9.45 | 7.45 HH 330 Cal



Spicy Cold Tofu
 Soft tofu with crunchy chili
 garlic sauce and kimchi
6.45 | 4.95 HH 260 Cal



Shio Negi Cold Tofu **V GF**
 Cold tofu topped with white
 soy sesame oil and green onions
5.95 | 4.45 HH 170 Cal



★ Fried Cheese Wontons **V**
 Cream cheese and green onions
 in crispy wontons. Served with
 sweet chili sauce
6.45 | 5.45 HH 330 Cal



Steamed Chili Dumplings
 Pork dumplings with
 crunchy chili garlic oil
8.00 540 Cal



Fried Pork Gyoza Dumplings
 Juicy fried pork dumplings
 Served with citrus ponzu
7.45 | 6.45 HH 480 Cal



Shrimp & Mushroom Ahijo* **GF**
 4 pieces of shrimp with mushrooms
 in olive oil, garlic, and basil
9.45 | 8.45 HH 360 Cal



Wakame Seaweed Salad **V**
 Refreshing seasoned seaweed
5.45 | 4.45 HH 120 Cal



Napa Kimchi
 Spicy, pickled cabbage
6.00 | 4.50 HH 40 Cal



Vegetable Spring Rolls **V**
 Mixed vegetables rolled in a light
 wonton wrapper and fried. Served with
 sweet chili sauce and a shishito pepper
7.95 | 6.45 HH 450 Cal



Tuna Poké Nachos*
 Fresh cubed tuna poké with diced avocado
 and seaweed salad. Served with sweet soy
 sauce, sesame oil, and crispy wonton chips
11.00 | 10.00 HH 310 Cal



Takoyaki
 6 fried octopus fritters drizzled with takoyaki
 sauce and Japanese mayo, topped with
 crushed bonito flakes and green onions
7.95 | 6.95 HH 530 Cal



Garlic Shio Cabbage **V GF**
 Cabbage tossed in signature shio
 white soy sauce and garlic chips. Enjoy
 with BBQ meat as a rice substitute!
3.95 60 Cal



Spicy Cabbage Salad **V**
 Shredded cabbage tossed with crunchy
 chili garlic dressing. Topped with
 green onions and sesame
5.95 | 4.95 HH 170 Cal



★ Fried Calamari
 Served with yuzu basil aioli
7.50 300 Cal



Chili & Yuzu Roast Beef
 Gyu-Kaku signature roast beef topped
 with crunchy chili garlic yuzu oil
10.00 420 Cal



Yuzu Shrimp Ceviche*
 Tossed blanched shrimp, onion,
 cucumber, tomato, and avocado with
 chili yuzu sauce, lemon juice, and
 crispy wonton chips
11.00 | 10.00 HH 360 Cal



Fried Bacon Chips
 Crunchy, deep-fried pork belly
 slices. Served with salt and lemon
7.95 | 6.45 HH 610 Cal



Edamame **V GF**
 Lightly salted boiled soybeans
5.00 | 4.00 HH 200 Cal



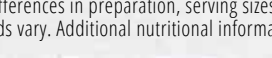
Cheese Corn Butter **V GF**
 Mix of melted butter, cheese, and
 corn served in a small cast iron skillet
6.45 | 4.95 HH 280 Cal



Chicken Katsu
 Crispy fried chicken cutlet served
 with okonomiyaki sauce
8.45 240 Cal



Yuzu Shishito Peppers **V GF**
 Skillet fried peppers with Japanese
 yuzu citrus! Occasionally spicy!
7.95 | 6.95 HH 270 Cal



Japanese Chicken Karaage
 Juicy Japanese fried chicken
 served with chili mayo sauce
7.45 390 Cal

★ = Best-Seller **GF = Gluten-Free** **V = Vegetarian Friendly**

Before placing your order, please inform your server if a person in your party has a food allergy.
 *These items may be served raw or undercooked, or contain raw or undercooked ingredients. Consuming raw or undercooked meats, poultry, seafood, shellfish, or eggs may increase your risk of foodborne illness. Calorie information is based on standard recipes and product formulations. Variations may occur due to differences in preparation, serving sizes, ingredients, or special orders. 2000 calories a day is used for general nutrition advice, but calorie needs vary. Additional nutritional information available upon request.

HH = HAPPY HOUR
HAPPY HOUR PRICES ARE APPLIED
ONLY DURING HAPPY HOUR

RICE



★ Beef Sukiyaki Bibimbap
 Sukiyaki-marinated beef, rice topped with white onions, green onions, and sesame. Served in a sizzling hot stone bowl
10.45 | 9.45 HH w/ Beef 710 Cal
12.45 | 11.45 HH w/ Double Beef 810 Cal



Beyond Bibimbap **V**
 100% plant-based Beyond Beef marinated in our secret Sukiyaki sauce, stir fried mushrooms, red bell peppers, and white onions. Flavored in butter and sesame oil, with green onions and sesame seeds served over rice.
12.45 | 11.45 HH 630 Cal
15.45 | 14.45 HH 770 Cal w/ Double Beyond Beef



Vegetable Sukiyaki Bibimbap **V**
 Rice, button mushrooms, broccoli, asparagus, green and white onions, red bell peppers, butter, sesame, and shoyu BBQ sauce
10.45 700 Cal



Garlic Fried Rice* **V**
 Garlic rice with green onions, white onions, egg yolk, sesame, and garlic chips
8.45 630 Cal



Spicy Kalbi Bibimbap **GF**
 Rice, kalbi beef, garlic, bell peppers, shishito peppers, corn, sesame, green onions, and Umakara sauce
11.95 730 Cal



White Rice **GF V**
3.50 Regular 340 Cal
5.00 Large 510 Cal



Organic Brown Rice **GF V**
4.50 360 Cal

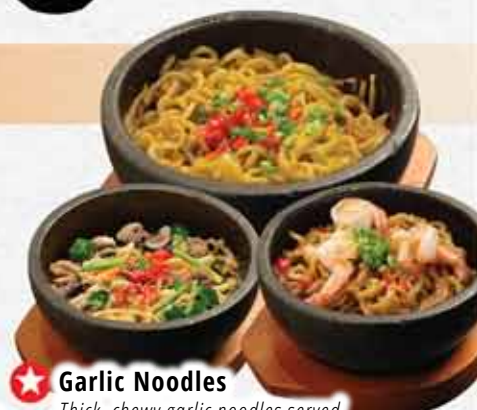
NOODLES



Spicy Beef Ramen **A**
 Kalbi soup broth, thin-sliced beef, egg, green onions, vegetables, sesame, and sesame oil
10.95 960 Cal / 840 Cal with Udon



Goma Negi Shio Ramen **A**
 Oxtail based house broth, kakuni chashu, egg, green onions, sesame, and sesame oil
10.95 930 Cal / 810 Cal with Udon



★ Garlic Noodles
 Thick, chewy garlic noodles served in a sizzling stone bowl with choice of:
10.95 | 9.45 HH w/ Chicken 820 Cal
11.95 w/ Vegetables 710 Cal V
13.45 w/ Shrimp 720 Cal



Spicy Chigae Ramen* **A**
 Rich and spicy soup, topped with kimchi, ground chicken, tofu, green onions, and sesame seeds. Finished with a poached egg dropped in the center
10.95 1040 Cal / 980 Cal with Udon



Tonkotsu Ramen **A**
 Rich pork bone broth, topped with kakuni chashu, boiled egg, chopped green onions and red bell peppers, and a dash of sesame seeds
10.95 810 Cal / 690 Cal with Udon



Miso Yaki Udon
 Thick udon noodles stir-fried in our special spicy miso sauce. Includes pork belly, mushrooms, onions, broccoli, cabbage, red bell peppers, and green onions. Topped with bonito flakes and a dash of sesame seeds
10.95 830 Cal

Prefer UDON? Please ask your server to substitute Ramen for Udon

MAKE IT SPICY!

Zero +\$0 **Spicy +\$0** **Super +\$0.25** **Krazy +\$0.50**

SOUPS

Spicy Tofu Chigae Soup* **A**
 Kimchi, ground chicken, tofu, sesame, egg, and green onions
9.95 270 Cal



Seaweed Soup **GF V**
3.95 30 Cal



Egg Soup **GF V**
 Silken egg in vegetable broth
4.95 80 Cal



Miso Soup **GF**
 Traditional Japanese soup
3.95 35 Cal



★ = Best-Seller **GF = Gluten-Free** **V = Vegetarian Friendly**

Before placing your order, please inform your server if a person in your party has a food allergy.

***These items may be served raw or undercooked, or contain raw or undercooked ingredients.**

Consuming raw or undercooked meats, poultry, seafood, shellfish, or eggs may increase your risk of foodborne illness.

A indicates that the sodium (salt) content of this item is higher than the total daily recommended limit (2,300 mg). High sodium intake can increase blood pressure and risk of heart disease and stroke • 2000 calories a day is used for general nutrition advice, but calorie needs vary. Additional nutritional information available upon request • Actual presentation may differ from images on the menu • Other restrictions may apply.

BEEF *Ready to Grill*

HH = HAPPY HOUR
HAPPY HOUR PRICES ARE APPLIED
ONLY DURING HAPPY HOUR



★ Prime Kalbi Short Rib* **GF**
Juicy marbled USDA prime beef that melts in your mouth. Served with premium dipping sauce
15.45 390 Cal
 Marinade choices: Sweet Soy Tare / Salt & Pepper



★ Harami Skirt Steak* **GF**
Our best-selling 21-day aged skirt steak
12.45 250 Cal
 Marinade choices: Miso / Shio



Kobe Style Kalbi Short Rib* **GF**
A must try for BBQ lovers! Intensely marbled beef short rib with a rich, mouthwatering texture. Served with premium dipping sauce
26.45 400 Cal
 Marinade choices: Sweet Soy Tare / Salt & Pepper



1/2 LB OF SPECIAL SKIRT STEAK!
Harami in Secret Pot* **GF**
1/2 lb of our best-selling meat in a special mild miso marinade! Great for sharing between 2 or more people
28.00 620 Cal
 Special Mild Miso Marinade



★ = Best-Seller **GF = Gluten-Free** **V = Vegetarian Friendly**
Before placing your order, please inform your server if a person in your party has a food allergy.

***These items may be served raw or undercooked, or contain raw or undercooked ingredients. Consuming raw or undercooked meats, poultry, seafood, shellfish, or eggs may increase your risk of foodborne illness.**
 2000 calories a day is used for general nutrition advice, but calorie needs vary. Additional nutritional information available upon request.

GF GLUTEN FREE

GYU-KAKU MARINADES AND DIPPING SAUCES ARE GLUTEN-FREE

SIGNATURE MARINADES

- GF Miso:** Rich miso flavor and soy sauce
- GF Sweet Soy Tare:** Soy sauce, pear juice, and ginger
- GF Shio:** Garlic, salt, soy sauce, and sesame oil
- GF Garlic:** Garlic paste with sesame oil, and shio white soy
- GF Teriyaki:** Rich soy sauce flavor and sweet glaze
- Basil:** Italian pesto (contains pine nuts), and sesame oil
- Spicy Jalapeño Miso:** Super spicy with a jalapeño kick and a miso twist

BEEF *Ready to Grill*

HH = HAPPY HOUR
HAPPY HOUR PRICES ARE APPLIED
ONLY DURING HAPPY HOUR



★ Beef Tongue* **GF**
A classic cut for Japanese BBQ.
Try it with a squeeze of lemon juice!
13.50 190 Cal
15.00 w/ Scallion Sauce 300 Cal
 Try with Lemon



★ Bistro Hanger Steak* **GF**
Tender and lean hanger beef
9.95 | **8.95 HH** 180 Cal
 Marinade choices:
 Miso / Garlic



Kalbi Chuck Rib* **GF**
Delicious, light marbled flavor
9.95 | **8.95 HH** 240 Cal
 Marinade choices:
 Sweet Soy Tare / Garlic



Filet Mignon* **GF**
Lean cuts of filet mignon
10.95 | **9.95 HH** 250 Cal
 Salt & Pepper



New York Steak* **GF**
Lean and juicy
10.45 | **8.95 HH** 150 Cal
 Marinade choices:
 Garlic / Miso



Angus Beef Rib* **GF**
Cubed short rib meat
8.45 | **7.45 HH** 210 Cal
 Marinade choices:
 Sweet Soy Tare / Miso



Premium Sirloin* **GF**
Hearty and tender.
Served with premium dipping sauce
10.45 | **9.45 HH** 120 Cal
 Marinade choices:
 Sweet Soy Tare / Salt & Pepper



Toro Beef* **GF**
Thin-sliced beef belly, just like bacon!
8.45 | **6.95 HH** 230 Cal
 Marinade choices:
 Sweet Soy Tare / Shio



★ Yaki-Shabu Beef* **GF**
Thinly sliced beef that grills quickly!
8.45 | **6.95 HH** 180 Cal
 Marinade choices:
 Miso / Sweet Soy Tare

GYU-KAKU FLAVOR KICKERS!



Kuki-Wasabi **V**
2.00 20 Cal



Crunchy Chili Garlic Sauce **V**
2.00 130 Cal



Scallion Sauce **GF V**
1.50 110 Cal



Cheese Fondue **GF V**
2.95 200 Cal



Original Garlic Butter **V**
2.95 180 Cal



Herb Garlic Butter **V**
2.95 140 Cal



Spicy Miso Garlic Butter **V**
2.95 210 Cal

★ = Best-Seller **GF** = Gluten-Free **V** = Vegetarian Friendly

Before placing your order, please inform your server if a person in your party has a food allergy.

***These items may be served raw or undercooked, or contain raw or undercooked ingredients. Consuming raw or undercooked meats, poultry, seafood, shellfish, or eggs may increase your risk of foodborne illness.** Calorie information is based on standard recipes and product formulations. Variations may occur due to differences in preparation, serving sizes, ingredients, or special orders. 2000 calories a day is used for general nutrition advice, but calorie needs vary. Additional nutritional information available upon request.

Umakara



UMAMI
Savory



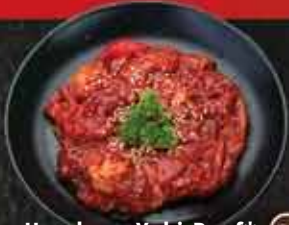
AMAMI
Sweet



KARAMI
Spicy



Umakara Ribeye* GF
8.95 | 7.45 HH 160 Cal



Umakara Yaki Beef* GF
8.45 | 6.95 HH 230 Cal



Umakara Pork* GF
6.95 | 5.45 HH 180 Cal



Even Better With
Garlic Shio Cabbage V GF
3.95 60 Cal

After grilling, enjoy it with cool, crunchy Garlic Shio Cabbage tossed in signature shio white soy sauce and garlic chips



POULTRY



★ Chicken Breast* GF
6.45 | 5.45 HH 110 Cal
Marinade choices: Basil / Teriyaki

+\$2.95 Great with
Cheese Fondue!
200 Cal



Garlic Shoyu Chicken Thigh*
Juicy chicken thigh pre-marinated with sweet garlic soy sauce
6.95 | 5.95 HH 130 Cal



Duck Breast* GF
9.95 | 8.95 HH 120 Cal
Marinade choices: Shio / Miso

PORK



Pork Belly* GF
Juicy pork belly slices
7.45 | 6.45 HH 510 Cal
Marinade choices: Shio / Sweet Soy Tare



Spicy Pork*
6.95 | 5.45 HH 280 Cal
Marinade: Spicy Jalapeño Miso



Japanese Pork Sausages* GF
Pork sausages with a hint of smoke
6.95 | 5.95 HH 320 Cal

SEAFOOD



★ Shrimp Garlic* GF
8.45 | 7.45 HH 200 Cal



Spicy Shrimp*
8.45 | 7.45 HH 220 Cal
Marinade: Spicy Jalapeño Miso



Shrimp & Mushroom Ahijo* GF
4 pieces of shrimp with mushrooms in olive oil, garlic, and basil
9.45 | 8.45 HH 360 Cal



Miso Butter Salmon* GF
Salmon filets served in a foil packet
9.50 250 Cal



BBQ Calamari Miso* GF
6.95 | 5.95 HH 180 Cal

HH = HAPPY HOUR
HAPPY HOUR PRICES ARE APPLIED
ONLY DURING HAPPY HOUR

★ = Best-Seller GF = Gluten-Free V = Vegetarian Friendly

Before placing your order, please inform your server if a person in your party has a food allergy. *These items may be served raw or undercooked, or contain raw or undercooked ingredients. Consuming raw or undercooked meats, poultry, seafood, shellfish, or eggs may increase your risk of foodborne illness. Calorie information is based on standard recipes and product formulations. Variations may occur due to differences in preparation, serving sizes, ingredients, or special orders. 2000 calories a day is used for general nutrition advice, but calorie needs vary. Additional nutritional information available upon request.

VEGETABLES



TO GRILL



Assorted Vegetables V GF
8.95 | 7.95 HH 230 Cal



Zucchini V GF
Drizzled with Shio
4.95 | 3.95 HH 25 Cal



Shishito Peppers V
Drizzled with soy sauce
and sprinkled with sesame
4.95 | 3.95 HH 190 Cal

TO STEAM

All foiled vegetables for steaming contain butter sauce



Spinach Garlic V GF
5.45 | 4.45 HH 240 Cal



Garlic Mushroom V GF
5.50 | 4.50 HH 290 Cal



Asparagus V GF
5.95 | 4.95 HH 120 Cal



Broccoli V GF
4.95 | 3.95 HH 110 Cal

Great with Cheese Fondue!
+ \$2.95 200 Cal



Mushroom Medley V GF
Assorted seasonal mushrooms
6.45 | 5.95 HH 130 Cal

SALADS

HH = HAPPY HOUR
HAPPY HOUR PRICES ARE APPLIED
ONLY DURING HAPPY HOUR



Yuzu Avocado Salad
Avocado, cucumber slices, tomatoes, and crunchy wonton croutons adorn a green leaf lettuce salad. Drizzled with our zesty and refreshing Yuzu Dressing
9.45 290 Cal
11.45 w/ Roast Beef 460 Cal
12.45 w/ Shrimp* 300 Cal
13.45 w/ Salmon 500 Cal



Gyu-Kaku Salad V
Mixed vegetables, daikon radish, hardboiled egg slices in our sesame house dressing
8.45 | 7.45 HH Full 310 Cal
4.95 | 4.45 HH Half 160 Cal



Karaage Avocado Salad
Juicy Japanese Chicken Karaage, avocado, variety of salad, vegetables, and sliced hardboiled egg. Mixed in house special white soy sauce dressing and drizzled with chili mayo sauce
9.95 540 Cal

★ = Best-Seller GF = Gluten-Free V = Vegetarian Friendly

Before placing your order, please inform your server if a person in your party has a food allergy. *These items may be served raw or undercooked, or contain raw or undercooked ingredients. Consuming raw or undercooked meats, poultry, seafood, shellfish, or eggs may increase your risk of foodborne illness. Calorie information is based on standard recipes and product formulations. Variations may occur due to differences in preparation, serving sizes, ingredients, or special orders. 2000 calories a day is used for general nutrition advice, but calorie needs vary. Additional nutritional information available upon request.